

嘉悅華庭 Glory Park

LANDSCAPE MASTER PLAN CONCEPT

The concept for the roof top landscape is focused on enjoyment of public and private space for family users. The idea is to be a park for use by the home owners, visitors and guest.

The central feature of the Phase I complex is a large lake with a tall fountain jet at one end and a nature island at the other end. The high rise condominiums are placed on top of the parking structure, but the lake is one level below the upper podium for the condominiums.

There will be boating in the lake by paddle boats and fishing pier to catch fish. Paths and gardens will connect the various circular stairways which led down from the upper podium.

A large cascade fountain will begin its fall from the upper podium, down to the lake level via a canal system.

The upper podium level will have active play elements and health features such as Jogging & Biking Trails, Tot & Play Areas, Ti Chi & Dance Areas, Kai Ponds, BBQ & Group Picnic Areas, Golf Putting Areas, Flower Gardens, and Vegetable Gardens.

The lush landscape will include season change plant gardens and seasonal recreation area based on climate. A large out door swimming pool and spa will include a swim-in bar under a water fall. In all the landscape will make the project an enjoyable place to live, raise a family or retire too.



sea.design
 san francisco - california - usa 2007
 stong & associates
 el cerrito - california - usa
 robert la rocca & associates
 san francisco - california - usa



CARREFORE
MACDONALD'S 14,000 sq-meter
590 sq-meter

PHASE 2/3
GENERAL RETAIL 12,230 sq-meter

PHASE 2/3
LARGE RETAIL
(3 stores) 6,750 sq-meter

LARGE RESTAURANT
SPA/HEALTH RESORT
CLUBHOUSE
NIGHTCLUB/KTV 5,000 sq-meter (4 story)
3,500 sq-meter (2 story)
1,100 sq-meter (2 story)
1,300 sq-meter (1 story)

PHASE 1 GENERAL RETAIL 15,100 sq-meter

OVERALL MASTER PLAN

嘉悅華庭 Glory Park



DIGITAL BOULEVARD AT GRADE LEVEL - VEHICULAR CIRCULATION

The Digital Boulevard is a unique retail experience through movement in space. The Boulevard is alive night and day with video screens, billboards and other multi-media imagery lined the shops on both sides. Shops can be seen on both at grade/vehicle level and podium level with clear signage.



DIGITAL BOULEVARD AT PODIUM LEVEL - PEDESTRIAN CIRCULATION

The dual-circulation system allows a safe, clean, and convenient environment for shopping on foot or by car. Immediate parking at the side of the Boulevard allows shoppers to "get there" whenever they see something enticing. Centralized drop-off area will also be provided for public transportation. Connecting the two levels are frequent escalator and elevators quick and effortless access to the shops above – when one would "arise" to a truly pedestrian-friendly zone.

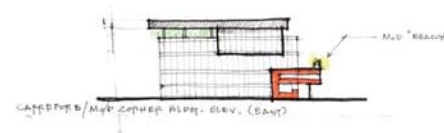
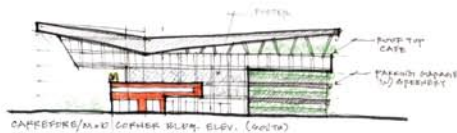
PERSPECTIVE RENDERINGS



sea.design
san francisco - california - usa 2007
stong & associates
el cerrito - california - usa
robert la rocca & associates
san francisco - california - usa

嘉悅華庭 Glory Park

PRELIMINARY SKETCH DESIGN - CARREFOUR/McDONALDS CORNER BUILDING



SOUTH ENTRANCE PLAZA AT RESTAURANT CORNER



DIGITAL BOULEVARD ENTRANCE AT CARREFOUR/McDONALDS CORNER

PERSPECTIVE RENDERINGS



DESIGN

sea.design

san francisco - california - usa 2007

stong & associates

el cerrito - california - usa

robert la rocca & associates

san francisco - california - usa